

TEXAS INTRASTATE FIRE MUTUAL AID SYSTEM (TIFMAS)



**Carter Johnson
and J.J. Wittig**
ESD Fire Chiefs
South Central Branch and
Central Branch Coordinators

HISTORY

- Created by state law in 2007
- First deployed 2008
- Operated through the Texas A&M Forest Service (TFS)
- Funded and approved by the Texas Division of Emergency Management (TDEM)



HISTORY

- Guided by a Stakeholder Group
- Operated by local fire department personnel serving as Branch Resource Coordinators
- Staffed by local firefighters



ALL RISK – ALL HAZARD INTEGRATED STATEWIDE MUTUAL AID RESPONSE



Hurricanes

Wildfires

Tornados

Floods

**Fire Dept.
Support**

Other

ROLES



- **Local Fire Departments are the Initial and Extended Attack Forces**
- **Texas Forest Service reinforces local fire departments**

ROLES



- **TIFMAS provides a “ready reserve” for local departments during emergencies**
- **Federal & State agencies reinforce TFS**

PARTICIPANTS (MARCH 2021)

DEPARTMENTS

76 Volunteer

107 Combination

130 Career

MEMBERS

8,082 All-Hazard

4,920 Wildland

QUALIFICATIONS



- All Hazards/Structural
- Industrial/Specialized
- Wildland



ALL HAZARDS

**SFFMA
Accredited
FF I/II or
Advanced**

**TCFP
Basic FF**



WILDLAND



**Engine
Operator**

Faller

ICT4

**Basic
Wildland**

**FF1
ICT5**

**Engine
Boss**

**Strike Team
and
Task Force
Leader**

**Division
Supervisor**

CAPABILITIES (WILDLAND)

**On the busiest day
in 2011, TIFMAS
had 30 Strike Teams
deployed across
Texas.**

The background image shows a scene of emergency response in a wildland area. In the foreground, the rear of a red fire truck is visible, with its emergency lights flashing. Behind it, a yellow utility vehicle, possibly a water tender or pump truck, is parked on a dirt road. The surrounding environment consists of dry, scrubby vegetation and trees in the distance under a hazy sky.

CAPABILITIES (HARVEY)

**TIFMAS deployed
985 personnel and
296 pieces of
equipment to the
Texas Gulf coast.**



ACTIVATION

**Local
Incident
Command**

**TIFMAS
State
Coordinator**

**TIFMAS
Branch
Coordinators**

**Local
Emergency
Operations
Center**

**Texas A&M
Forest
Service**

Local FD

**DC/District
Disaster
Chair**

**State
Operations
Center**

**TFS
Emergency
Operations
Center**

TIFMAS BRANCH RESOURCE COORDINATORS



STATE COORDINATOR

Chief Keith Kiplinger
Nacogdoches FD
kiplingerk@ci.nacogdoches.tx.us
936-559-2541



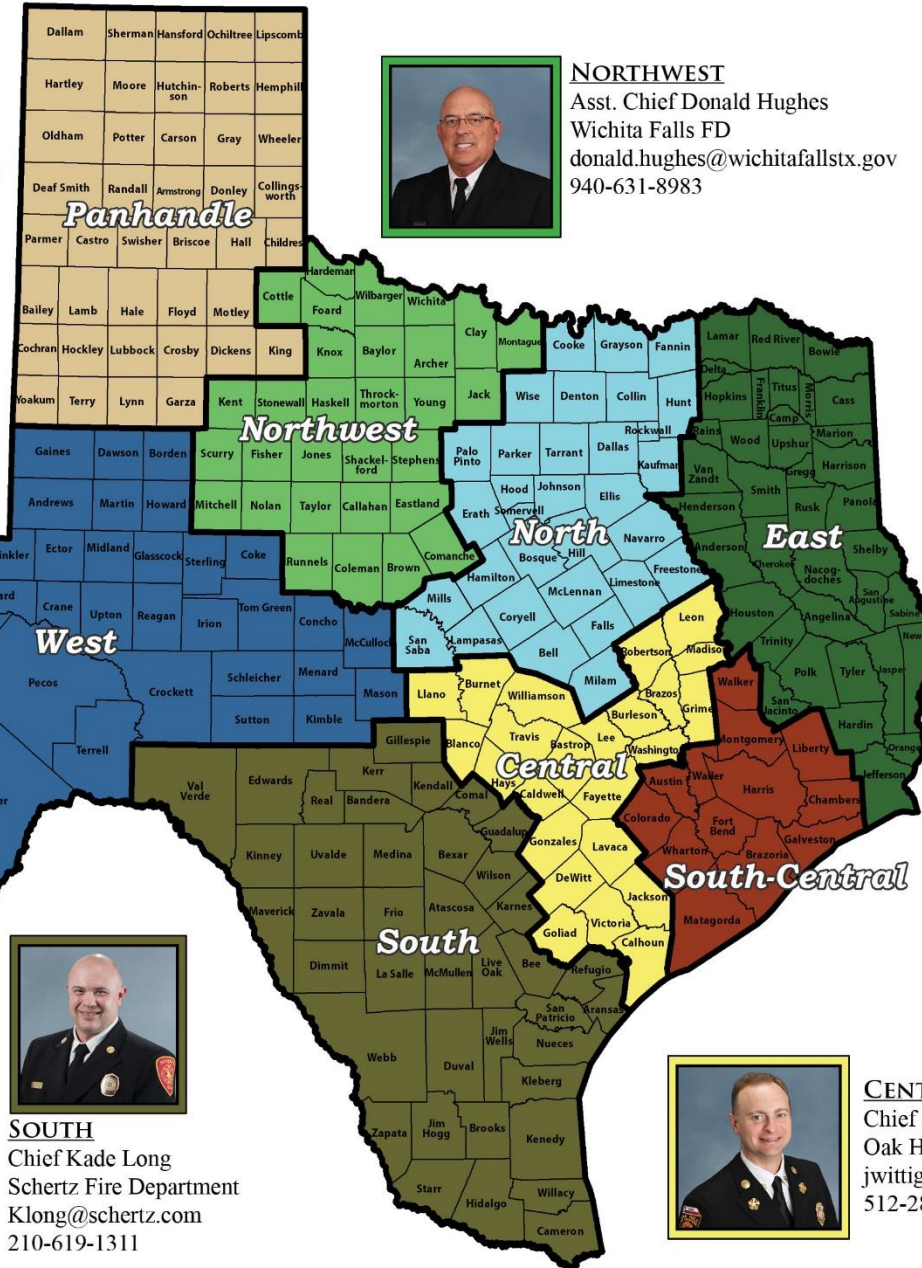
PANHANDLE

Lee Jones
Lubbock FD
CLJones@mail.ci.lubbock.tx.us
806-767-3713



WEST

Michael Tully
Midland FD
mtully@midlandtexas.gov
432-685-7330



NORTHWEST

Asst. Chief Donald Hughes
Wichita Falls FD
donald.hughes@wichitafallstx.gov
940-631-8983



NORTH

Deputy Chief Kyle Mills
Frisco FD
kmills@friscofire.com
972-214-5274



EAST

Fire Marshal Michael Brown
Nacogdoches FD
brownm@ci.nacogdoches.tx.us
936-559-2578



SOUTH CENTRAL

Chief Carter Johnson
Porter Fire FD
cjohnson@porterfire.com
832-986-2426



SOUTH

Chief Kade Long
Schertz Fire Department
Klong@schertz.com
210-619-1311



CENTRAL

Chief JJ Wittig
Oak Hill FD (TCESD#3)
jwittig@oakhillfire.org
512-288-5534 ext. 214

GRANTS

Departments not eligible for 2604



\$800,000
Apparatus

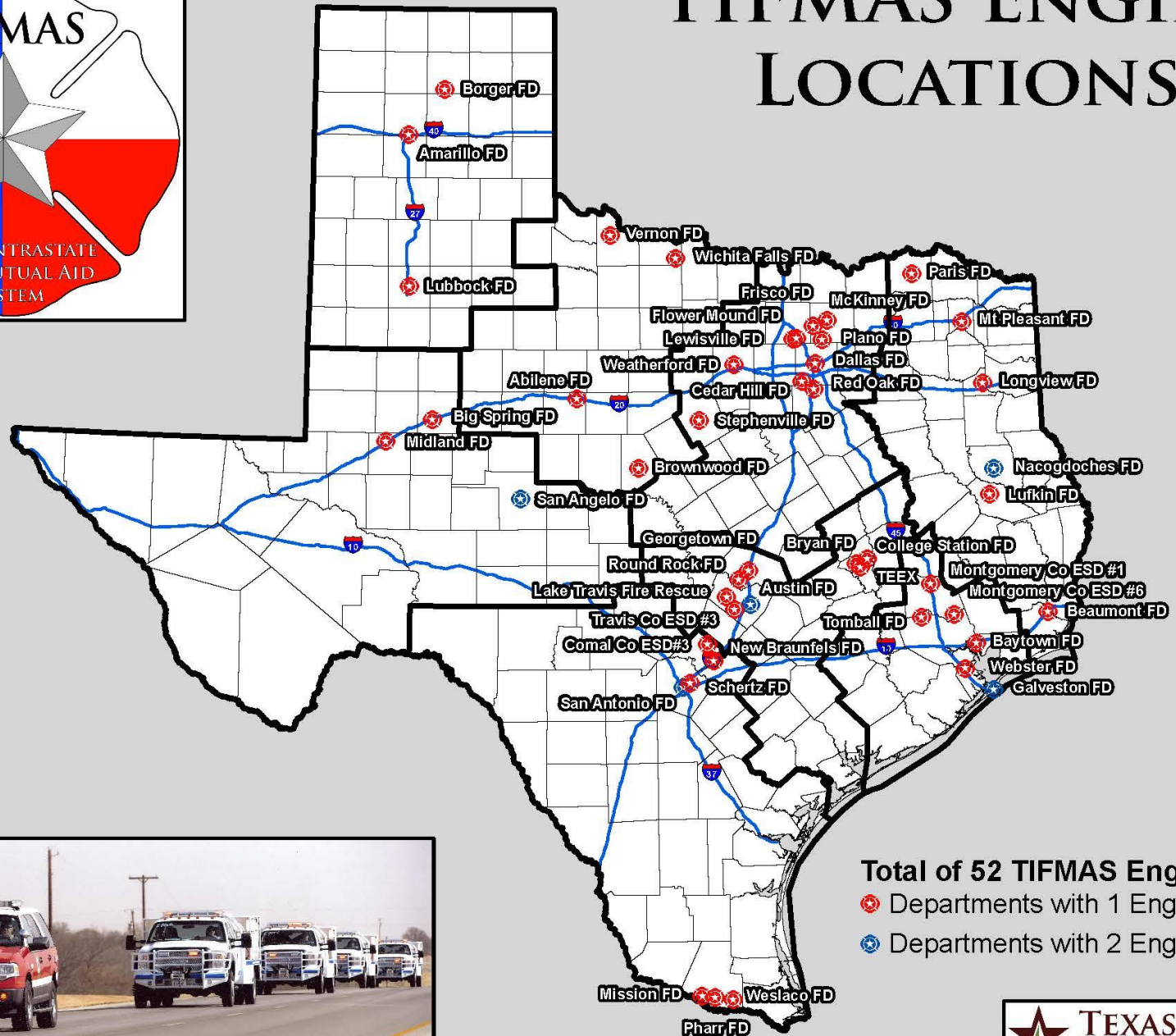
\$200,000
Training

APPARATUS





TIFMAS ENGINE LOCATIONS



Total of 52 TIFMAS Engines

- Departments with 1 Engine
- Departments with 2 Engines



WILDLAND CACHE

Nacogdoches
100 Person

Austin
100 Person

Midland
25 Person

McKinney
25 Person



HOW TO PARTICIPATE

Individual
Departments

Partnering
Departments



HOW TO PARTICIPATE

Recognized TIFMAS Qualifications

- All Hazards (Structural)
- Industrial (see Business Manual for requirements)
- Basic Wildland (FFTII)
- Engine Operator (ENOP)*
- Basic Faller (FAL3)*
- Wildland Firefighter I (FFI/ICT5)
- Engine Boss (ENGB)

HOW TO PARTICIPATE

Recognized TIFMAS Qualifications, cont.

- Incident Commander Type 4 (ICT4)
- Strike Team Leader (STEN)
- Task Force Leader (TFLD)
- Division / Group Supervisor (DIVS)

WHY PARTICIPATE?

- What kind of real life, hands-on training do your personnel receive for major disasters / incidents?
- IF you could pay for that kind of training, how much do you think it would cost?
- If a disaster or significant incident occurs, what real life experiences do your personnel have to fall back on?

DEPLOYMENT

- Deployments are for a minimum of seven (7) days, which can be extended another seven (7) based on response needs and with home agency approval
- Wildland deployments require personnel to be self-sufficient for three (3) days (tents, food/MREs, etc.)

REIMBURSEMENTS

All Deployments are reimbursed
“Portal-to-Portal”

- Reimbursed for all hours from time deployment begins to time returned to home unit
- Vehicles are reimbursed based on actual hours worked (NO fuel)

REIMBURSEMENTS

- Includes up to two hours prior to deployment for preparation
- Includes up to two hours after return for returning equipment to service
- Includes “Backfill” for normal shift when a minimum staffing policy is in place

REIMBURSEMENTS

Resources returning to their home base with regularly scheduled shift the day of return or the day following their return:

- Additional backfill not to exceed 24 hours will be granted
- Insures proper rest for firefighters

REIMBURSEMENTS

- Per Diem follows local agency guidelines
- The TIFMAS Business Manual provides a model guideline if the local agency does not have one

REIMBURSEMENTS

APPARATUS

(per current FEMA Schedule)

Type VI - \$70.33/hr

Type III - \$70.33/hr

Type I - \$74.57-\$81.40/hr

Tender – \$102.67-119.50/hr

Ladder - \$121.00-\$146.43/hr

Boat - \$12.55-\$16.58/hr

Command/SUV - \$19.62/hr

MEMBERS

Career-Actual Cost

Volunteer-\$14/hr

REIMBURSEMENTS

Deployment

Reimbursement Request

TDEM Review

Governor's Audit

Payment (goal is within 90 days)



TIFMAS BRANCH RESOURCE COORDINATORS



STATE COORDINATOR
Chief Keith Kiplinger
Nacogdoches FD
kiplingerk@ci.nacogdoches.tx.us
936-559-2541



PANHANDLE
Lee Jones
Lubbock FD
CLJones@mail.ci.lubbock.tx.us
806-767-3713



WEST
Michael Tully
Midland FD
mtully@midlandtexas.gov
432-685-7330



SOUTH
Chief Kade Long
Schantz Fire Department
Klong@schantz.com
210-619-1311



NORTHWEST
Asst. Chief Donald Hughes
Wichita Falls FD
donald.hughes@wichitafallstx.gov
940-631-8983



NORTH
Deputy Chief Kyle Mills
Frisco FD
kmills@friscofire.com
972-214-5274



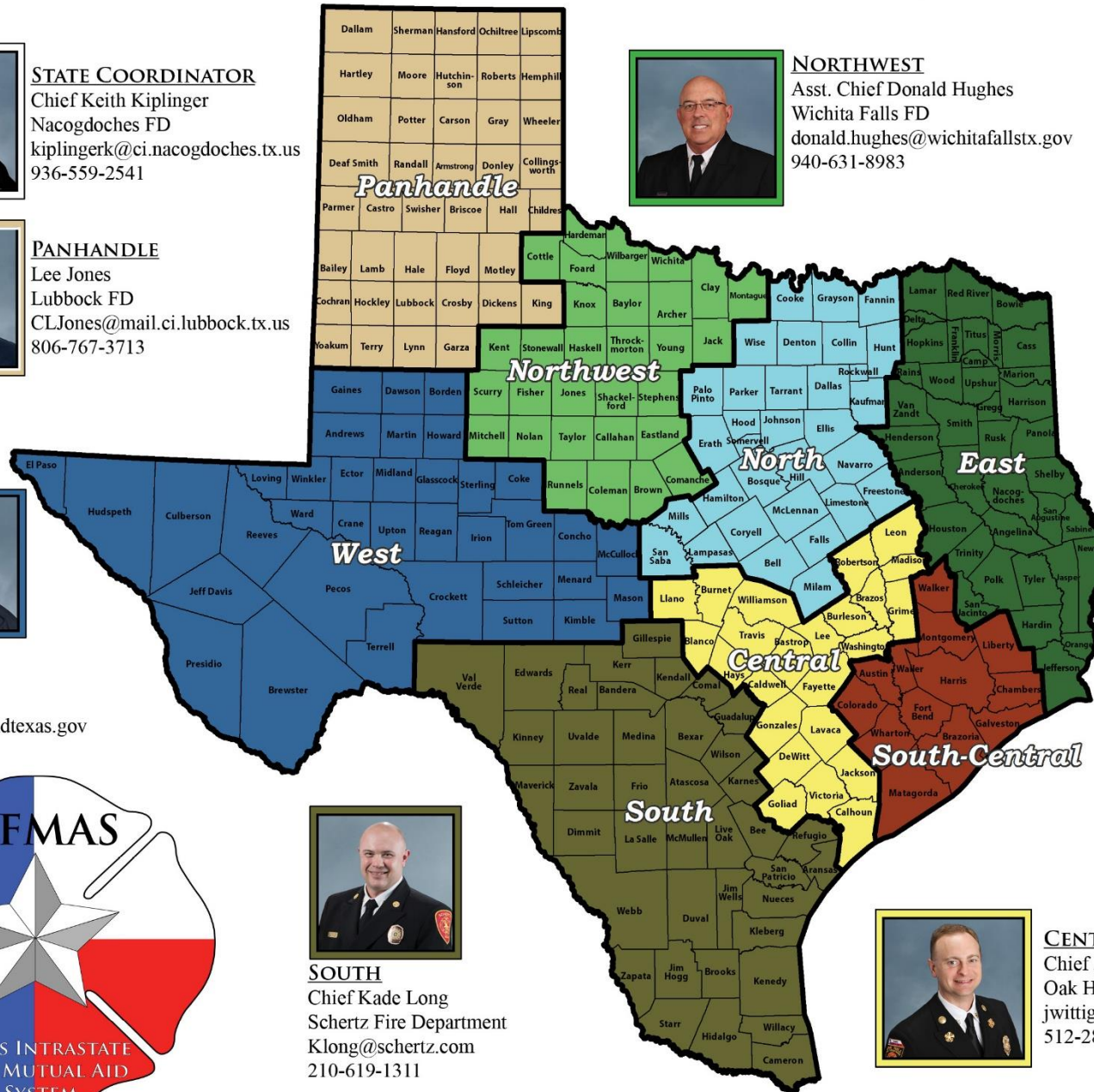
EAST
Fire Marshal Michael Brown
Nacogdoches FD
brownm@ci.nacogdoches.tx.us
936-559-2578



SOUTH CENTRAL
Chief Carter Johnson
Porter Fire FD
cjohnson@porterfire.com
832-986-2426



CENTRAL
Chief JJ Wittig
Oak Hill FD (TCESD#3)
jwittig@oakhillfire.org
512-288-5534 ext. 214



The background of the image shows a fire truck driving away on a two-lane road. In the distance, there is a large plume of white smoke rising into a blue sky with some clouds. The overall scene suggests a fire incident being managed.

TIFMAS

Texas Firefighters

Helping

Texas Firefighters

www.TIFMAS.org