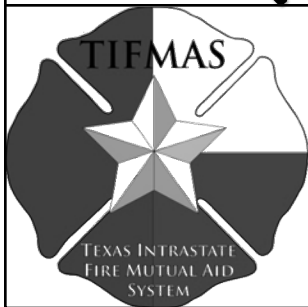


TEXAS INTRASTATE FIRE MUTUAL AID SYSTEM (TIFMAS)



**Carter Johnson
and J.J. Wittig**
ESD Fire Chiefs
South Central Branch and
Central Branch Coordinators

1

HISTORY

- Created by state law in 2007
- First deployed 2008
- Operated through the Texas A&M Forest Service (TFS)
- Funded and approved by the Texas Division of Emergency Management (TDEM)



2

HISTORY

- Guided by a Stakeholder Group
- Operated by local fire department personnel serving as Branch Resource Coordinators
- Staffed by local firefighters



3

ALL RISK – ALL HAZARD INTEGRATED STATEWIDE MUTUAL AID RESPONSE



4

ROLES

- **Local Fire Departments are the Initial and Extended Attack Forces**
- **Texas Forest Service reinforces local fire departments**

5

ROLES

- **TIFMAS provides a “ready reserve” for local departments during emergencies**
- **Federal & State agencies reinforce TFS**

6

PARTICIPANTS (JANUARY 2020)

DEPARTMENTS

160 Volunteer

134 Combination

135 Career

MEMBERS

7,067 All-Hazard

4,648 Wildland

7

QUALIFICATIONS



- All Hazards/Structural
- Industrial/Specialized
- Wildland



8

ALL HAZARDS

**SFFMA
Accredited
FF I/II or
Advanced**

**TCFP
Basic FF**



9

WILDLAND



10

WILDLAND

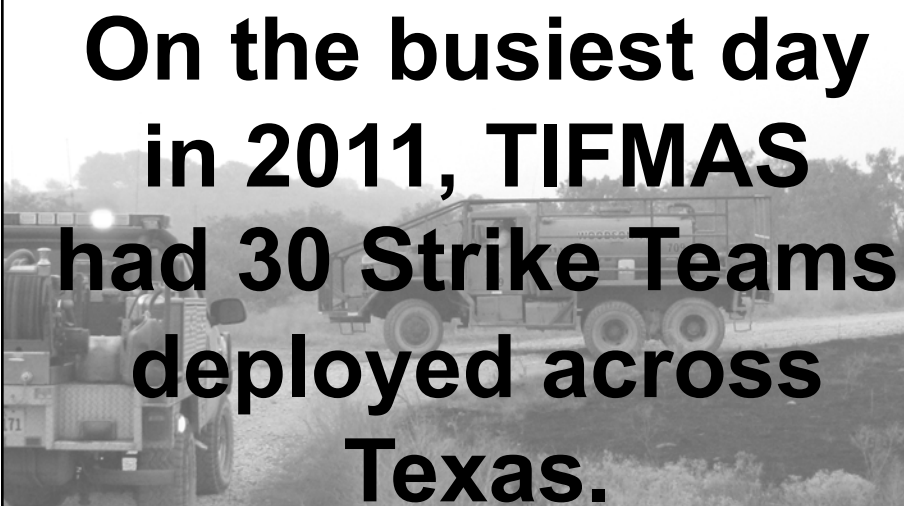
<u>Apparatus</u>	<u>Personnel</u>
Type I/II Engine	3-4
Type III Engine	3-5
Type VI Engine	2-3
Strike Team or Task Force Leader	1-2
Tender	2-5

*Arduous Work Capacity (Pack) Test required for all Wildland Assignments Effective 01/01/2021

11

CAPABILITIES (WILDLAND)

**On the busiest day
in 2011, TIFMAS
had 30 Strike Teams
deployed across
Texas.**



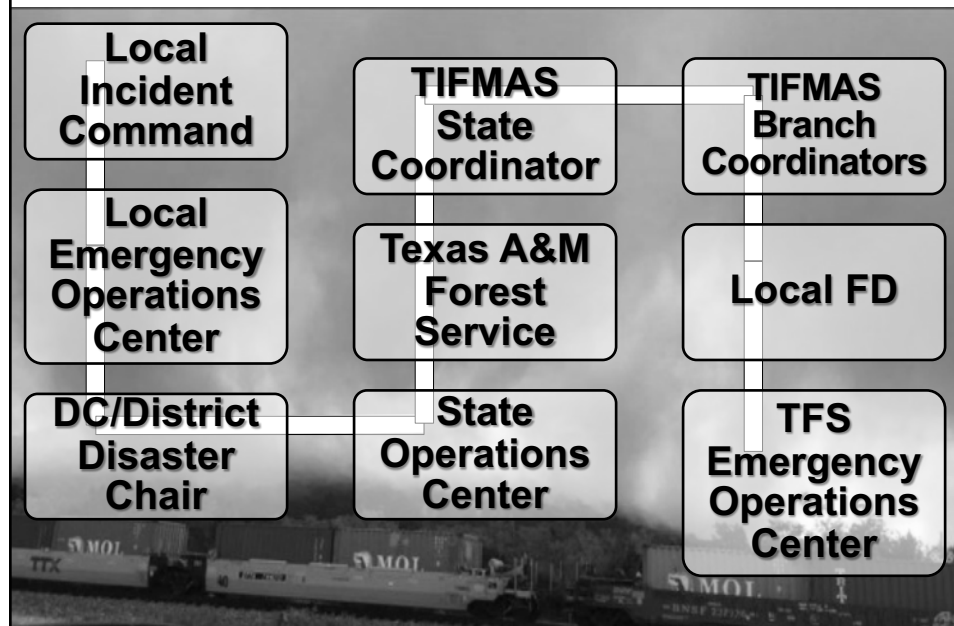
12

CAPABILITIES (HARVEY)

**TIFMAS deployed
985 personnel and
296 pieces of
equipment to the
Texas Gulf coast.**

13

ACTIVATION



14

TIFMAS BRANCH RESOURCE COORDINATORS

STATE COORDINATOR
 Chief Keith Kiplinger
 Nacogdoches FD
 kiplingerk@ci.nacogdoches.tx.us
 936-559-2541

PANHANDLE
 Lee Jones
 Lubbock FD
 CLJones@mail.ci.lubbock.tx.us
 806-767-3713

WEST
 Michael Tully
 Midland FD
 mtully@midlandtxas.gov
 432-685-7330

SOUTH
 Chief Kade Long
 Schertz Fire Department
 Klong@schertz.com
 210-619-1311

NORTHWEST
 Asst. Chief Donald Hughes
 Wichita Falls FD
 donald.hughes@wichitafallstx.gov
 940-631-8983

NORTH
 Deputy Chief Kyle Mills
 Frisco FD
 kmills@friscofire.com
 972-214-5274

EAST
 Fire Marshal Michael Brown
 Nacogdoches FD
 brownmm@ci.nacogdoches.tx.us
 936-559-2578

SOUTH CENTRAL
 Chief Carter Johnson
 Porter Fire FD
 cjohnson@porterfire.com
 832-986-2426

CENTRAL
 Chief JJ Witting
 Oak Hill FD (TCESD#3)
 jwitting@oakhillfire.org
 512-288-5534 ext. 214

REVISED APRIL 09th 2020

15

GRANTS

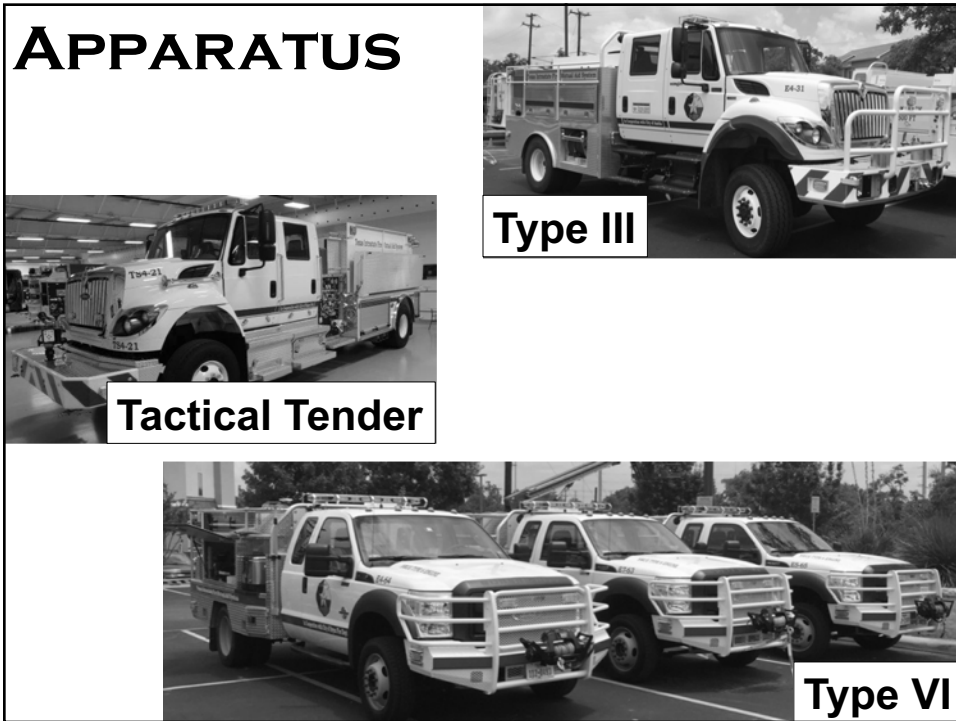
Tiered Response to Wildfires

Departments not eligible for 2604

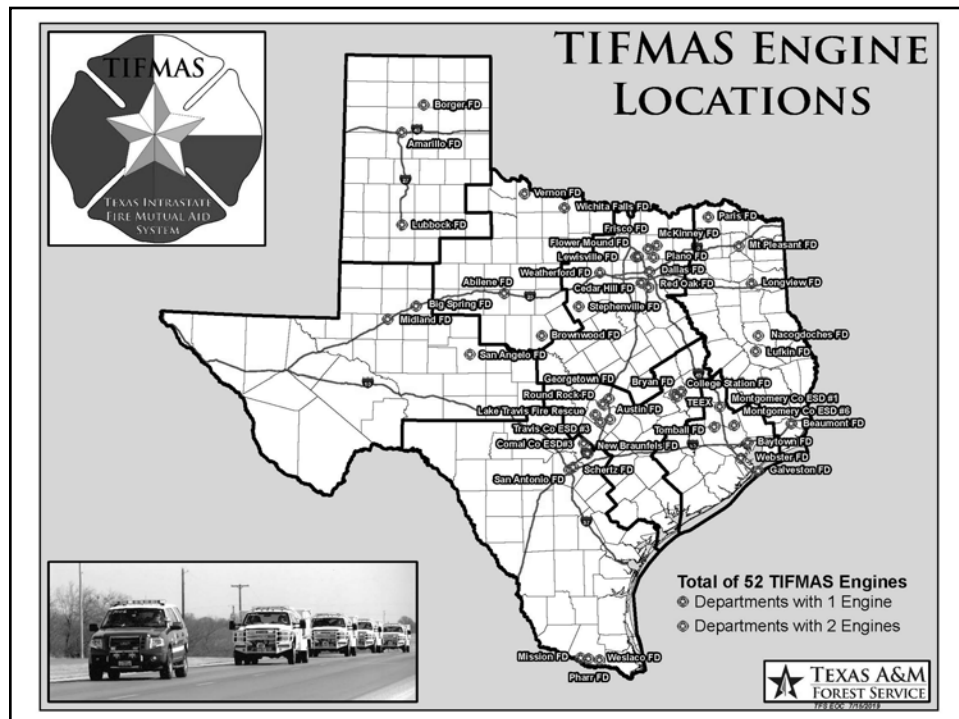
\$800,000
Apparatus

\$200,000
Training

16



17



18

WILDLAND CACHE

Tiered Response to Wildfires

Nacogdoches
100 Person

Austin
100 Person

Midland
25 Person

McKinney
25 Person



19

HOW TO PARTICIPATE

Individual
Departments

Partnering
Departments



20

HOW TO PARTICIPATE

Recognized TIFMAS Qualifications

- All Hazards (Structural)
- Industrial (see Business Manual for requirements)
- Basic Wildland (FFTII)
- Engine Operator (ENOP)*
- Basic Faller (FAL3)*
- Wildland Firefighter I (FFI/ICT5)
- Engine Boss (ENGB)

21

HOW TO PARTICIPATE

Recognized TIFMAS Qualifications, cont.

- Incident Commander Type 4 (ICT4)
- Strike Team Leader (STEN)
- Task Force Leader (TFLD)
- Division / Group Supervisor (DIVS)

22

WHY PARTICIPATE?

- What kind of real life, hands-on training do your personnel receive for major disasters / incidents?
- IF you could pay for that kind of training, how much do you think it would cost?
- If a disaster or significant incident occurs, what real life experiences do your personnel have to fall back on?

23

DEPLOYMENT

- Deployments are for a minimum of seven (7) days, which can be extended another seven (7) based on response needs and with home agency approval
- Wildland deployments require personnel to be self-sufficient for three (3) days (tents, food/MREs, etc.)

24

REIMBURSEMENTS

All Deployments are now reimbursed
“Portal-to-Portal”

- Reimbursed for all hours from time deployment begins to time returned to home unit
- Vehicles are reimbursed based on actual hours worked (NO fuel)

25

REIMBURSEMENTS

- Includes up to two hours prior to deployment for preparation
- Includes up to two hours after return for returning equipment to service
- Includes “Backfill” for normal shift when a minimum staffing policy is in place

26

REIMBURSEMENTS

- Resources returning to their home base with regularly scheduled shift the day of return or the day following their return
- Additional backfill not to exceed 24 hours will be granted
- Insures proper rest for firefighters

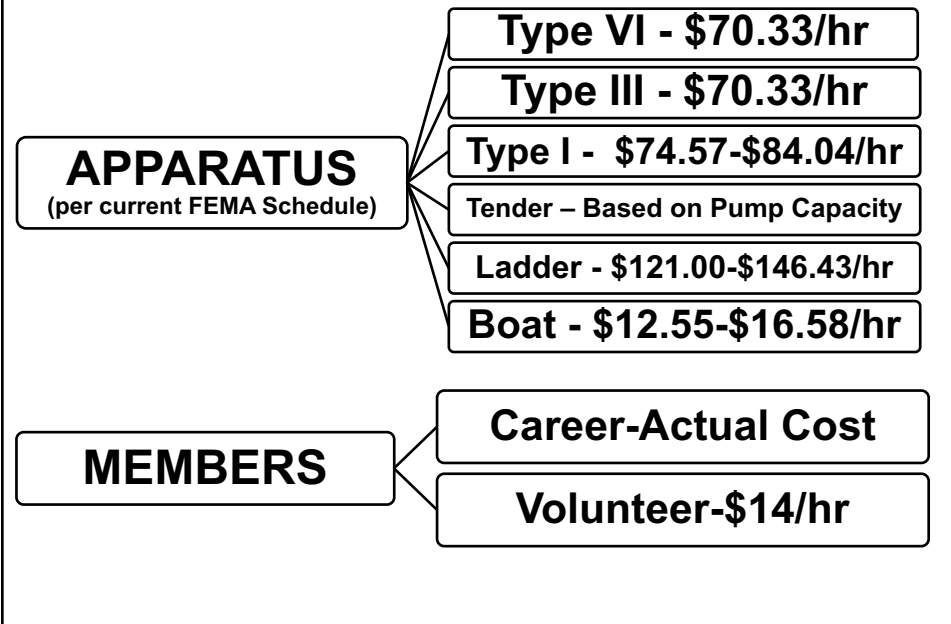
27

REIMBURSEMENTS

- Per Diem follows local agency guidelines
- The TIFMAS Business Manual provides a guideline if the local agency does not have one

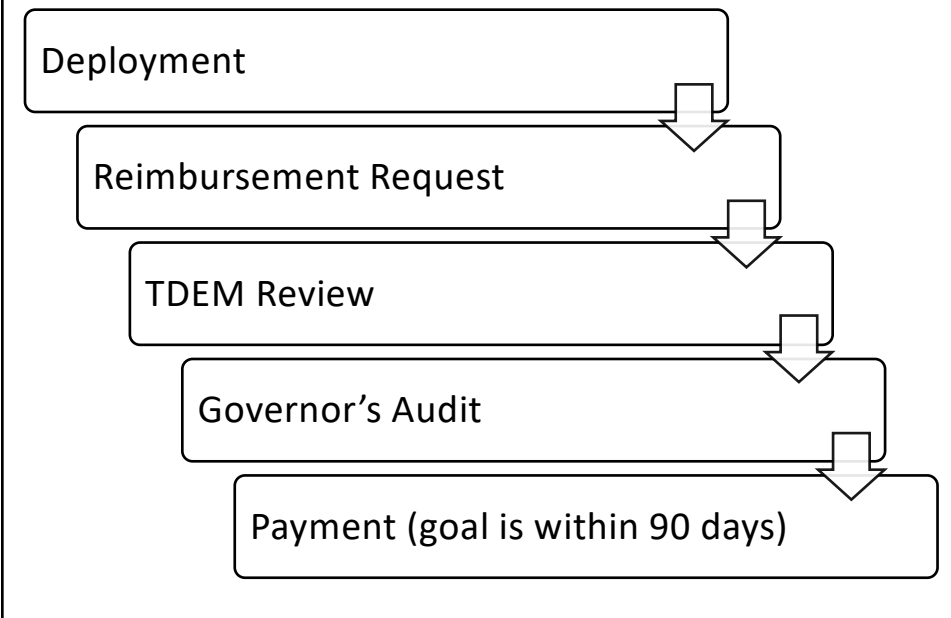
28

REIMBURSEMENTS



29

REIMBURSEMENTS



30

TIFMAS BRANCH RESOURCE COORDINATORS

STATE COORDINATOR
 Chief Keith Kiplinger
 Nacogdoches FD
 kiplingerk@ci.nacogdoches.tx.us
 936-559-2541

PANHANDLE
 Lee Jones
 Lubbock FD
 CLJones@mail.ci.lubbock.tx.us
 806-767-3713

WEST
 Michael Tully
 Midland FD
 mtully@midlandtexas.gov
 432-685-7330

NORTHWEST
 Asst. Chief Donald Hughes
 Wichita Falls FD
 donald.hughes@wichitafallstx.gov
 940-631-8983

NORTH
 Deputy Chief Kyle Mills
 Frisco FD
 kmills@friscofire.com
 972-214-5274

EAST
 Fire Marshal Michael Brown
 Nacogdoches FD
 brownmm@ci.nacogdoches.tx.us
 936-559-2578

SOUTH
 Chief Kade Long
 Schertz Fire Department
 Klong@schertz.com
 210-619-1311

SOUTH CENTRAL
 Chief Carter Johnson
 Porter Fire FD
 cjohnson@porterfire.com
 832-986-2426

CENTRAL
 Chief JJ Witting
 Oak Hill FD (TCESD#3)
 jwitting@oakhillfire.org
 512-288-5534 ext. 214

REVISED APRIL 09th 2020

31

TIFMAS

Texas Firefighters

Helping

Texas Firefighters

www.TIFMAS.org

32